



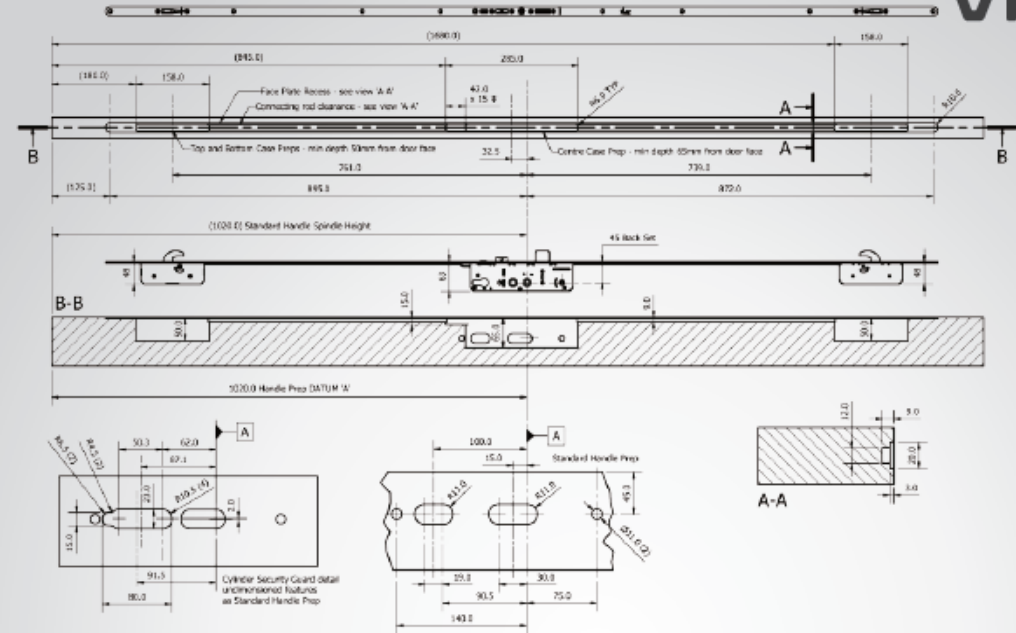
FEATURES & BENEFITS

- Designed to meet the requirement of PAS23/24
- Secured by Design
- Dual spindle
- 35mm and 45mm backset option
- Reversible latch to minimize stocking
- Snib facility as standard
- Fully adjustable multi-keep system available
- Keep adjustability +/-3.5mm
- Face plate options, 16mm full length, 20mm round end in mild steel or stainless steel
- Packaged as 5 per box



MULTI-POINT COMPOSITE DOOR LOCK

Designed to meet the requirements of PAS 23/24 and Secured by Design, the Avantis Bi-Directional, Multi-Point Door Lock's 25mm deep throw hooks and bolt system combine to provide the ultimate in security and weather performance.



25mm deep throw bi-directional hooks for enhanced security



Multi-keep system



Available with first ever UK designed twin fix cylinder guard protection system, designed to eliminate cylinder snapping



25mm horizontal centre dead bolt for enhanced security

All locks are supplied in a Silver Trivalent finish to comply to BS EN 1670 Grade 4 (240 hours).