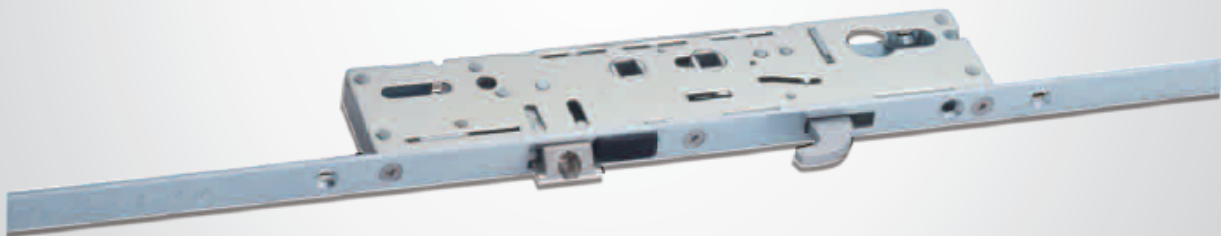


FEATURES & BENEFITS

- Designed to meet the requirements of PAS23/24
- Single or Dual spindle options
- 35mm backset
- Three opposing steel hooks
- Bi-directional throw of hooks for enhanced security
- Adjustable roller cams
- Slave lock variant
- Reversible latch to minimise stocking
- Snib facility as standard on all locks
- Fully adjustable, one-piece keep and multi-keep system available
- Through fix one-piece keep
- Keep adjustability +/-2.0mm
- High security shootbolt
- Packaged as 5 per box

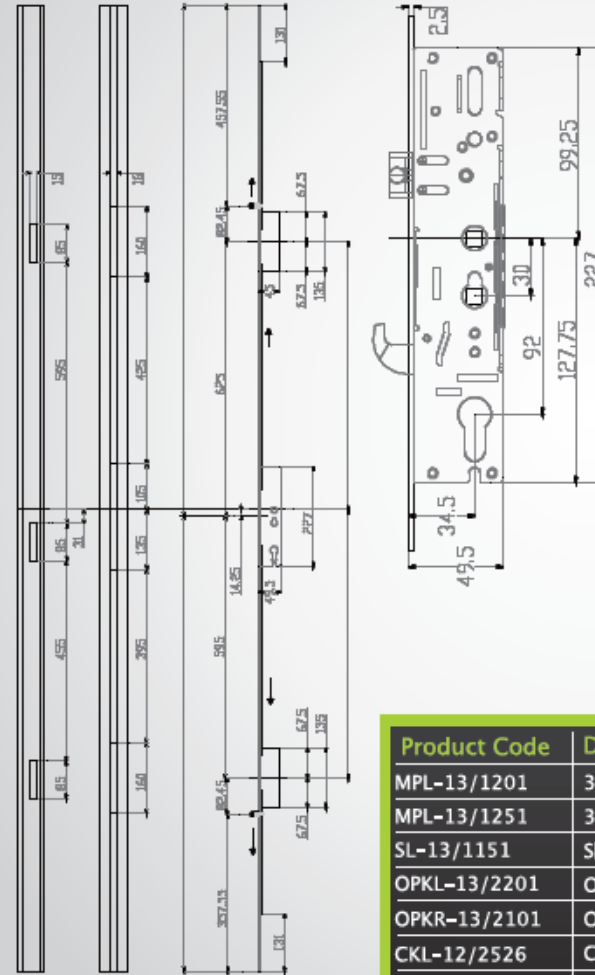
MULTI-POINT
DOOR LOCK
FOR PVC-U

Designed and developed to meet the requirements of PAS 23/24, the Scimitar Bi-directional Multi-point Door Lock offers enhanced security and reliability, in conjunction with ease of assembly and smooth operation. The lock's strength is achieved through the fitment of three steel hooks, which ensures that anti-separation of the PVC-u sash and frame is maintained whilst engaged in the locked position. Adjustment to gasket compression is achieved by either the two adjustable roller cams, or fully adjustable keeps.

SCIMITAR



Available in both a single or dual spindle variant, the Scimitar covers the full spectrum of applications, ranging from short back plate door handles on the single spindle lock, to dual spindle, which covers Front door, Back door and French doors all from the one router detail, with a long back plate door handle. All Scimitar locks are supplied fully serrated top and bottom to cover French door systems and shootbolt applications.



All locks supplied in a Silver Trivalent finish to comply to BS EN 1670 Grade 4 (240 hours)



| Product Code | Description |
|----------------|--|
| MPL-13/1201 | 3 Hooks, 2 Rollers & Latch 92mm PZ Single Spindle |
| MPL-13/1251 | 3 Hooks, 2 Rollers & Latch 92/62mm PZ Dual Spindle |
| SL-13/1151 | Slave Lock 92mm PZ Single Spindle |
| OPKL-13/2201 | One Piece Keep-Left Hand |
| OPKR-13/2101 | One Piece Keep-Right Hand |
| CKL-12/2526 | Centre Keep-Left Hand |
| CKR-13/2551 | Centre Keep-Right Hand |
| TBK-13/2501 | Top & Bottom Keep Set (Pair) |
| MPLSB-13/3101 | Mild Steel S/Bolt Set (2 Single Direction) |
| MPLR-13/3111 | 400mm Roller Extension |
| MPLFDK-13/2586 | French Door Double Bolt Keep Set |
| MPLFSK-13/2576 | Single Shoot Bolt Keep Set |